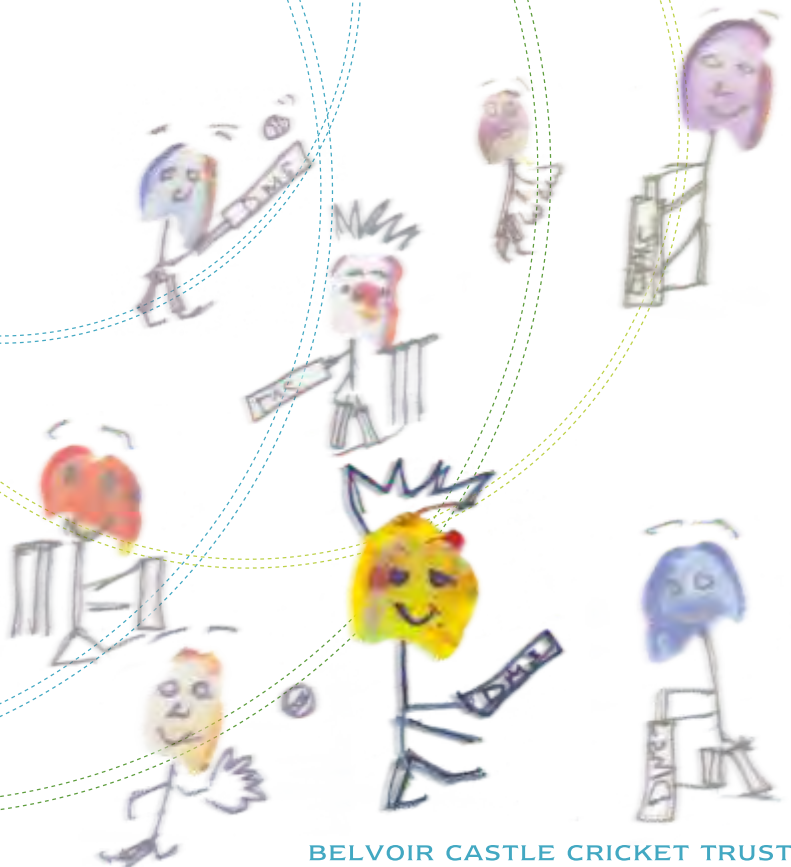
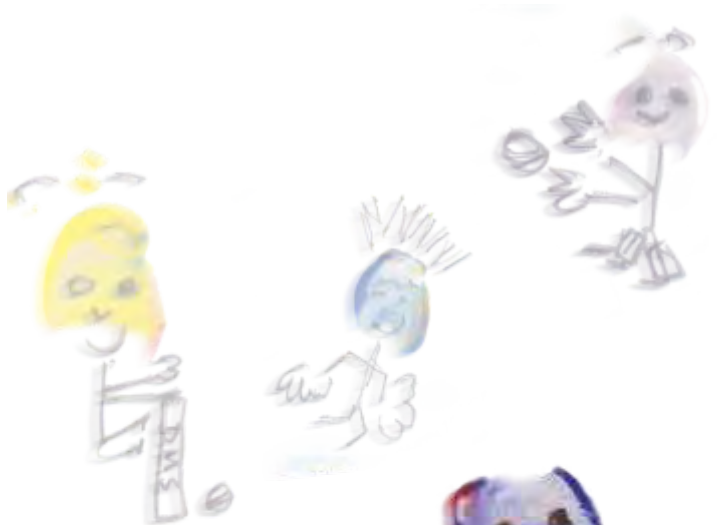


# Review 2012





## Contents

---

03	Patron's Message
04	Director's Review
06	Belvoir Bees
08	Cricket and Countryside School Days
10	Teach Cricket Programme
11	Special Needs Schools Programme
12	Volunteers
14	Profile & Fundraising
15	Financial Overview
16	Our Supporters & Sponsors



Our thanks to the children of Derrymount Special Needs School for the design of our cover and contents page.

Is it really only 4 years since this little cricket trust started at Knipton? I find it amazing to see the activity around the Vale of Belvoir increasing every year – and am astounded when I read through the Annual Review and see the number of children and volunteers engaged in the work of the charity.

I ask Darren every year for the running total of children who have experienced the Trust's Cricket and Countryside Education projects since its humble start. He tells me this year there are now well over 6,000 children. Darren's tireless (and often very tiring) work has made all this happen. He was a cricketing star – but is now the Vale of Belvoir's cricketing celebrity!

It has also been a pleasure to see the Trust move towards some financial stability. The life of a small charity is always rather "hand to mouth". Certainly, this will continue to be a challenge during the recession – but the team did a great job on finding generous donors and creating some stunning events.

On a personal note, I would like to thank all those who took part in the Belvoir Castle Charity Shoot. The Trust received a donation of £10,000 from this event – and it was wonderful that the shooting community took the charity to heart in this way.

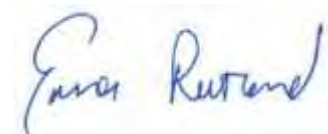
Darren worked with over 100 volunteers to help with delivery. These are such generous people who give their time to work with children. I give them my heartfelt thanks. As always, the Trustees were in support - we continue to work with the executives to provide help with fundraising. Nina was brilliant in leading much of the fundraising and organisation. We wish her well as she moves on to other things. At this time we welcome Neil into the team. He was brilliant during the summer working with the children – and will now take on some of the administration alongside Darren.

We should also mention the 7 Cricket Trust volunteers who went out to Uganda and Rwanda in the spring with the charity Cricket without Boundaries. It sounded like a tremendous lifetime experience. I liked the idea so much that I am booked to go to Rwanda in Spring 2013 – will need to work on my cricket coaching skills!

Our regular MCC match proved to be a great day (brilliant weather for a change) – only spoiled by the result. Must do better in 2013. It's become a regular in the MCC calendar and we now aim to play the day before the Trent Bridge Test each summer.


I look forward to 2013 and working again with our volunteers and supporters. Thank you to those who have helped make 2012 another year to remember (despite the weather).

Kind regards



Emma, Her Grace the Duchess of Rutland





Well despite what can be only described as a distinctly 'Wet Summer' - which is perhaps an understatement - I am delighted to say that the Trust has continued to go from strength to strength.

Our numbers have increased, our venues have increased, our volunteer numbers have increased yet we have retained our incredible level of delivery and professionalism.

Great credit should go to our staff and volunteers who continue to amaze me with their enthusiasm and commitment.

2442 children have benefitted from our projects this year and the response and feedback which you will see later in this annual review has been wonderful and makes me realise just how much our work means to our children. Huge credit must go to our coaches and support staff so Nina, Neil, Greg, Keith, John & Nicky thank you, it would not be possible without you.

There are many other vital people behind our work and impossible to mention them all here, they know who they are and will be mentioned later.



- **Belvoir Bees** increased to 7 venues this year with Whissendine and Grantham joining Long Clawson, Croxton Kerrial, Great Dalby, Melton Mowbray and Knipton. It was often wet but did not seem to dampen the spirit of the children.
- **Cricket & Countryside** totalled 30 days with the continuing theme of having two schools per day – often from very different backgrounds that worked really well with the children and the teachers mixing readily. It is certainly something we will continue to work with in 2013.
- **Our Special Needs Schools Project** was expanded to include 'Table Cricket' with the support of CP Sport and a partnership with Nottinghamshire County Cricket Club to compliment the other cricket activities. It was a new venture for me and included a training course in Blackpool, of all places, but it quickly became an incredibly rewarding part of our work with some incredibly challenged physically disabled children being able to take part in our wonderful game of cricket. To have these children also come and visit us here at Belvoir Castle was lovely. I will never forget flying the birds of prey indoors on a very wet day in June at the cricket pavilion and a young blind girl being able to touch 'Persil' our Barn Owl – that experience for her was very special.

**Our Teach Cricket project**, taking cricket back into Primary schools was extended to include Allington and Huntingtower, while continuing the work with Stathern, Redmile, Croxton and Harlaxton. Our push on this will continue.

We now boast over 100 volunteers supporting our projects. Volunteering is time consuming and a commitment but our volunteers give their time incredibly generously. Above all they believe in what we do and see the value of contributing to their community. Without you our Trust would not function and I cannot thank you enough.

Our fund raising programme continues with our Annual Golf Day, MCC cricket game (a game which the Duchess XI were not at their best this year but we will leave it at that I think) and our 'Evening With' event featured the former England Captain Tony Greig and Jonathan Agnew which was held at the iconic Trent Bridge Cricket ground. Introduced this year was our first Charity 6-a-side day which was a great day out and won this year by Fisher German who I am sure will be back in 2013 to take on all comers and defend their title.

We were also very fortunate to be one of the nominated charities for Her Grace's Belvoir Castle Charity Clay shoot in what turned out to be a magnificent day, superbly hosted by the Estate. Our grateful thanks to Her Grace the Duchess of Rutland for thinking of us it was a truly memorable day.

It is always very difficult in a short piece to mention everyone and I am sure I will look back and think I could have said more but to all our supporters thank you, to our Trustees, our Patron Her Grace the Duchess Rutland, Chairman Phil O'Brien and to Nina Coverley and Neil Atkins a really heartfelt thank you.

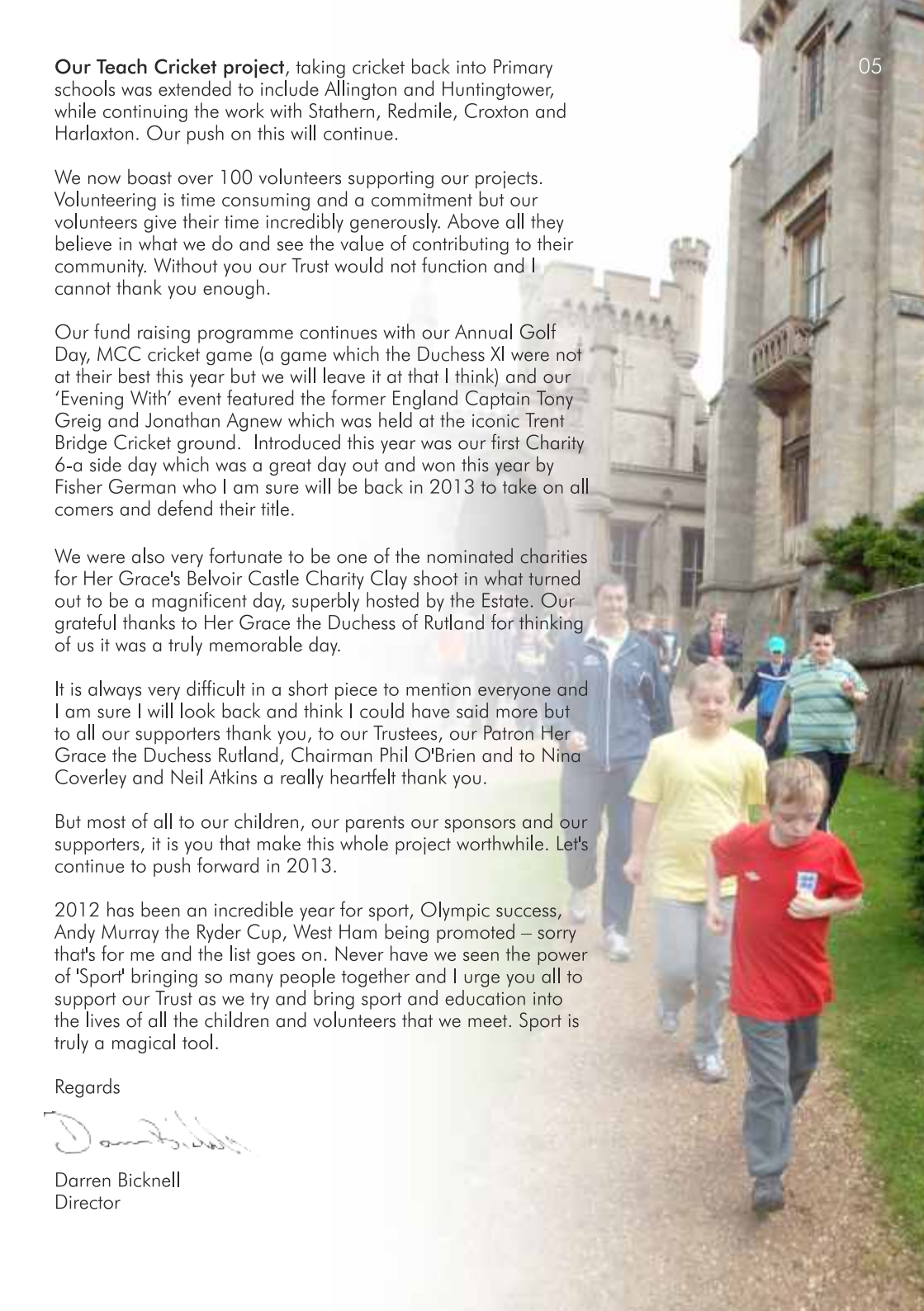
But most of all to our children, our parents our sponsors and our supporters, it is you that make this whole project worthwhile. Let's continue to push forward in 2013.

2012 has been an incredible year for sport, Olympic success, Andy Murray the Ryder Cup, West Ham being promoted – sorry that's for me and the list goes on. Never have we seen the power of 'Sport' bringing so many people together and I urge you all to support our Trust as we try and bring sport and education into the lives of all the children and volunteers that we meet. Sport is truly a magical tool.

Regards



Darren Bicknell  
Director



# Belvoir Bees

- 346 children enjoying 3,528 hours of out of school active sport

- giving children, 6-11 years, the opportunity to play sport and learn skills on a regular basis
- encouraging involvement of adult volunteers in sports activities
- involving all members of the family in the activities through social interaction in a rural community



Our new Belvoir Bees logo designed by Katy from Redmile Primary School

The Trust continues to offer “Belvoir Bees” sessions at a number of rural/small town venues (typically a small cricket ground). These sessions provide a taster, not only for children to participate in sport and learn skills, but also provide a focussed way for local families to meet and generally become more involved in developing their community. This project is cricket based but encourages participation at all levels of skill. It is NOT a Cricket Club – and there are no team selections. It promotes inclusion and regular 90 minutes activity on a weekly basis through the summer months.

## Croxton Kerrial

- 26 children registered
- Small community with limited catchment
- 4 regular volunteers

## Grantham

- 45 children registered
- New BCCT venue for 2012
- 5 regular volunteers

## Great Dalby

- 21 children registered
- entering Kwik Cricket league in 2012
- 7 regular volunteers

## Knipton

- 115 children registered
- Club introduced hard ball U10 & U11 cricket teams in 2012
- Winter coaching introduced 2011/2012
- 6 regular volunteers

## Long Clawson

- 34 children registered
- moved to new Ground in the village in 2012
- junior teams entering Leicestershire leagues
- 6 regular volunteers

## Melton

- 63 children registered
- junior teams entering Leicestershire leagues
- introduced further, Club run, junior initiatives in 2012
- 8 regular volunteers

## Whissendine

- 42 children registered
- New BCCT venue for 2012
- 8 regular volunteers

The Bees continues to be well received with positive feedback from parents and Cricket Clubs:

During 2012 the Belvoir Bees model was delivered in 7 rural/small county town communities, with the support of 44 local volunteers. Through the introduction and running of the Belvoir Bees, the Trust has been instrumental in the regeneration of small, rural and in some cases failing cricket clubs by working with them to develop sustainable junior cricket sections and enabling a pathway for youngsters to access competitive junior cricket:

*"...Thanks for all you do with Belvoir Bees. My son Thomas has absolutely loved playing cricket this year (despite the weather!) All your efforts are very much appreciated..." ~ Bees Parent*

*"...Despite a rather soggy summer at Whissendine Sports Club, the Bees sessions we ran every Monday evening, were a great highlight of the week for 42 children ranging in age from 6 to 11 and an equal mix of girls and boys.*

*The 90 minute sessions, which flew by, run by Neil and a team of 5 or 6 volunteers from the village, were fantastically run, and hugely enjoyable for all the children, whatever age group and helped bring them together in the village, come and make use of our fantastic cricket ground, whatever the weather, perfectly prepared for us each week, by Brian Bates.*

*To summarise, the Whissendine Bees in 2012, can only be regarded as a great success for the village, the sports club, the community, but most importantly for all the children who came to the sessions and we look forward to working with Darren, Neil and all the team at the Belvoir Castle Cricket Trust in 2013 and beyond."*

*~ Johnny Bingham – Whissendine Sports Club*

In 2013, the Belvoir Bees project will continue at 7 venues – including a new venue, yet to be confirmed which will replace Croxton Kerrial. We plan to introduce grading, assessments and records of achievement. The sessions will also be used to further encourage volunteer engagement and community integration through the introduction of friendly competitive cricket across the venues i.e. Bees Tournament.



To continue the development of junior cricket for 11+ the Trust will continue to work closely with local clubs in supporting them until they become self-sufficient in running their own junior cricket. The Trust will also support Belvoir Bees venues in working with the English and Wales Cricket Board (ECB) and nurturing relationships with the regional ECB Boards to develop and grow these Cricket Clubs.



## Cricket and Countryside School Days

-1,676 children playing 2682 hours of active sport and taking part in 3352 hours of outside education

- giving the opportunity for primary school children and youngsters with special needs to visit the countryside
- giving children aged 6-11 years the opportunity to partake in sporting activities and get a feel for the countryside
- introducing children to the game of cricket

The Trust aims to help the education of primary age children (and older children with special needs or disabilities). This is delivered by bringing children to the countryside and offering them multi-activity days which will include cricket, healthy lifestyle choices, countryside pursuits and farming/rural issues.



*"Our children got an immense amount out of the day. We took a mixed group of KS2 pupils. The feedback from the children was overwhelmingly positive! For many of our pupils the day offered them an opportunity to meet children from totally different backgrounds and experience aspects of the countryside they would otherwise not have access to."*

Tim Garland, Deputy Head, Northfields Primary School, Leicester

In the summer of 2012, a total of 30 (incl. 10 special needs) school days were delivered giving 1,676 children access to cricket and countryside activities. With the support of Her Grace the Duchess of Rutland and the Belvoir Estate staff and local volunteers – both sport coaches and those involved in the local countryside – over 600 hours of volunteer time was spent with the children. The days typically included 2 hours sporting activities/coaching and 2.5 hours of 'education' - learning about the countryside from local people such as the farmer, woodman, gamekeeper, huntsman etc.

In 2013 we will continue to extend the reach of the Trust to include schools from within an area of 25 miles around Belvoir Castle where the school days will be used to promote all the Bees venues. We will look to partner with other similar organisations that deliver 'outside' education. We will also be working closely with the Schools to enhance the educational and lifestyle messages that are delivered and where possible look to twin schools from different backgrounds (i.e. small rural schools with larger, multi-cultural inner city schools).



# Teach Cricket Programme

- 122 children participating in 854 hours of in-school active sport

Our in-school programme works with rural schools to provide cricket opportunities for children, where they do not have the resources to include cricket as part of their teaching. Cricket is all inclusive and not only provides physical education but can also contribute to the curriculum in many ways:

- Physical education (playing cricket, learning skills)
- English (match reports, verbal communication)
- ICT (scoring, scorecards / books)
- Mathematics (scoring, run rates, strategy)
- Citizenship (rules, responsibility, teamwork and individual contribution, etiquette, strategy, diplomacy)
- Personal, social and health education (role models, active and healthy lifestyle)
- CPD for the schools' teaching staff



During 2012 the programme was delivered in 6 Vale of Belvoir primary schools, all of which were outside the boundaries / catchment for the well-known Chance to Shine project. Our programme was over a 7 week period seeing 20 children from each school received weekly cricket coaching sessions during the summer. The pilot was supported by The Cricket Society Trust who raise funds to:

*"...broaden the horizons of those youngsters through understanding the values that cricket can bring to their lives... We are pleased to help Darren and his team develop programmes which will enhance opportunities for youngsters to appreciate how cricket can be both fun and educational."*

~ Ken Merchant, Trustee and Hon. Secretary, The Cricket Society Trust

In 2013 we are looking to extend this to 7/8 schools with a greater emphasis on the cross-curricular nature of cricket.

*'The children were very enthused by the cricket sessions. Several of our children (including the younger ones) have attended the Belvoir Bees cricket sessions and in particular several of our children were thrilled to also see pictures of themselves and their friends on the posters in the cricket club house.*

*The coaches were absolutely superb with the children and the days were extremely well organised. Each activity focussed on a different element of cricket and the coaches differentiated it so that all of the children (including our youngest) were able to access the sport at their level. We have invested in further PE equipment that will continue to support the teaching of cricket but certainly want to work with the trust again in delivering the program to our children.'*

Troy Jenkinson – Head Stathern Primary School



# Special Needs Schools Programme

- 310 youngsters taking part in 1,550 hours of active sport

- giving youngsters with special needs the opportunity to play sport and learn skills on a regular basis
- supporting Special Needs schools to facilitate and provide active sport for their young people
- introducing youngsters to the game of cricket

New for 2012, our special needs school days and in-school cricket coaching throughout the winter were supplemented with a project of Table cricket that enabled children with severe physical disabilities to participate in cricket. This was delivered in partnership with CP Sport and Nottinghamshire County Cricket Club – and was a huge success. Over a 5 week period (February - March), 10 schools each received weekly cricket coaching from Trust Director Darren Bicknell, with on average 30 children taking part at each school. The programme continued with these children by giving them the opportunity of taking part in the Cricket and Countryside School Days at the Belvoir Estate during the summer.



*'The young people at school thoroughly enjoyed the table top cricket. It enhanced their hand eye co-ordination and fine motor skills within a healthy atmosphere of competition. They particularly enjoyed learning the various signals used by umpires! After finding a table top kit deep in the recesses of the storeroom, I introduced the game to the primary children which again went down exceptionally well.'*

*Darren and all the staff made our young people feel very much at home learning a new game - which for some was quite difficult. The pace of the lessons was good giving the pupils a chance to absorb the information. The way you communicated with the pupils was excellent and the banter with pupils like Umar and Paddy created a very positive atmosphere within the lesson.*

*We would very much like to continue with the programme in 2013 as well as participating in any competitions you organise.*

*As a footnote the sessions with the more able students were also excellent and it was encouraging to see the progress made by these pupils in such a short time particularly in the skills of catching, striking a moving ball and teamwork.*

*Overall a very positive and enjoyable programme delivered in a competent and professional manner.'*

Mark Lacey,  
Head of Nethergate Special Needs School in Clifton, Nottingham



- 104 volunteers delivered 1,892. volunteer hours (average 18 hours volunteering per person

- involving adults in volunteering
- giving focused skills training for specific needs of the Trust projects – without getting hindered by administration/qualifications
- giving volunteers clear responsibility to help coach – without the administrative or responsibility burden associated with helping at a sports club (e.g. can you join the committee; will you ring around the parents; can you organise the fixtures; can you buy the cricket balls; etc.)

The scheme continues to be successful with 104 volunteers (both coaching and education) from the local communities. The Trust Director delivered training workshops for our cricket volunteers. Our volunteers actively support the cricket coaching, many exceeding their committed hours, and on average each volunteer has given 18 hours of sport coaching throughout the summer. It is the Trust's aim that these volunteer hours are spent on direct contact hours with the children and not on administrative tasks. Additional volunteers have also come forward to help with fundraising and administration such as child registration at sessions.

In Spring 2012, seven volunteers from the Trust went out to Africa with the charity Cricket Without Boundaries. Six (including the Trust Chairman and Director) went to Uganda and another to Rwanda. The Trust also hosted a training weekend for the CWB volunteers. This is a complimentary organisation – using cricket for social change. The volunteers all came back with many skills that can be applied to their work at the Trust.



In 2013 we will continue to increase our volunteer network through communication and actively engaging with the parents and local community, whilst continuing to develop lead coaches at each of the venues. We will also assist in developing and nurturing members of the local cricket clubs to enable those clubs to continue in the development of junior cricket.



### Countryside

Angie Barsby  
 Anne Campbell-  
 Lamerton  
 Barry Kay  
 Cindy Keeley  
 Claire Marris  
 Dave Boynton  
 David Crossland  
 Glen Main  
 Gordon Clarke  
 Jan Pollard  
 Jim Wiggins  
 John Holliday  
 John Shearon  
 Jon Cox  
 Kay Gibson  
 Kyle Burden  
 Lady Sarah  
 McCorquodale  
 Pauline Shepherd  
 Peter Bates  
 Phil Burt  
 Rhi Clarke  
 Richard Botterill  
 Ron Wells  
 Roy Pollard  
 Stephen Trigg  
 Tom Howe  
 Tom Keely

### Coaching

Alan Dawson  
 Alan Lockwood  
 Alan Marsh  
 Andy Mitchell  
 Ben Redwood  
 Chris Bates  
 Chris Dickinson  
 Clive Larson  
 Dan Cleall  
 Darren Smith  
 Dave Penford  
 David Biggadyke  
 Eddie Pearson  
 Graham King  
 Greg Dyer  
 Jason Corghi  
 John Bartley  
 John Mace  
 John Sunderland  
 Jonny Bingham  
 Judith Pearce  
 Karl Tew  
 Keith Tomblin  
 Ken Kirk  
 Ken Vickers  
 Lee Freer  
 Lee Gurney  
 Lesley Hawkes

Malcolm Edwards  
 Marcus Hurrell  
 Mark Gibbs  
 Mark Goddard  
 Martin James  
 Matt Whitfield  
 Max Everett  
 Michael Marsh  
 Mick Whitfield  
 Mike Pratt  
 Neil Atkins  
 Nigel Dickinson  
 Owen Lloyd  
 Peter Foulds  
 Peter Hood  
 Richard Cowan  
 Richard Lloyd  
 Robert Hendy  
 Rosie Penford  
 Rupert Smallshaw  
 Ryan Taylor  
 Sally Everett  
 Sam Cleall  
 Simon Crossland  
 Stephen Henderson  
 Stephen Hines  
 Stuart Bowden  
 Tony Mould

### Other

Charlotte Booth  
 Claire Bicknell  
 David Mitchell  
 James Clayfield  
 Julie James  
 Kate Bates  
 Lisa Sylvester  
 Megan Turner  
 Nick Morgan  
 Nicky Somerville  
 Nina Coverley  
 Norman Starks  
 Paul Adams  
 Pete Knapp  
 Rachael Thomas  
 Richard Clayfield  
 Rory Kerr  
 Sam Penford  
 Tony Abelwhite  
 Torin Taylor  
 Vic Heppenstall  
 Wendy Brown

## Profile and Fundraising

### Belvoir Castle Charity Shoot Day – Thursday 3<sup>rd</sup> May

Her Grace the Duchess of Rutland very kindly made the Trust, along with Combat Stress, a benefactor of the Annual Charity Shoot Challenge at Belvoir Castle. The exact figure raised was £10,139. We would like to offer personal thanks to Her Grace for her support.

### Duchess of Rutland XI vs. MCC – Thursday 24<sup>th</sup> May

The MCC continue to support the Trust in our efforts to involve more people in grass roots cricket. The annual cricket match took place on a sunny day at Knipton Cricket Ground Belvoir Castle grounds with victory going to the MCC by a comfortable margin of 9 wickets. The game was followed by dinner in the state dining room at Belvoir Castle where the guests listened to tales from the legendary BBC Test Match Special broadcaster Henry Blofeld. The dinner was attended by approximately 100 MCC Committee, Officials, Members, Players and Guests and was hosted by Her Grace the Duchess of Rutland.

### An Evening with Tony Greig & Jonathan 'Aggers' Agnew – Wednesday 27<sup>th</sup> June

Belvoir Castle Cricket Trust Trustee and former MCC President Phillip Hodson secured a rare UK appearance by Tony Greig in support of the Trust and along with Jonathan 'Aggers' Agnew. A dinner and Q&A evening took place at Trent Bridge. The event raised £1,641. It has begun what we hope will be an annual event. Graeme Swann has confirmed that he is happy to be our main guest for a date in 2013.

### Golf Day – Wednesday 26<sup>th</sup> September 2012, Radcliffe on Trent

Our successful annual Golf Day continued with the Golf Day at Radcliffe on Trent. This year we raised £2,873 from the event and were supported by Mark Arthur the Nottingham Forest Chief Executive who did a Q&A with trust Director Darren Bicknell. Our 4<sup>th</sup> running of the annual event was won by Gary Fowler and his Trimmings by Design team.

The date for 2013 is confirmed as Thursday September 19<sup>th</sup>.

### Corporate 6-a-side event - Tuesday 4<sup>th</sup> September 2012, Knipton Cricket Ground

Our inaugural 6-a-side cricket day played at Knipton cricket ground proved to be a great success. Four teams Fisher German, Stapleford Park & John Chaffeild-Roberts and the Duchess side drawn from volunteers of BCCT played out a hugely successful day.

The format of 6-a-side matches, a stunning BBQ and afternoon tea proved to be a great hit and the teams that took part have already expressed a desire to return in 2013.

The day raised £1,255. We aim to increase the day to 8 teams in its current format and have a confirmed date of Wednesday 4<sup>th</sup> September.



### 2013 Planned Events

- MCC v Duchess of Rutland XI – held at Knipton Cricket Ground (Tues 9<sup>th</sup> July)
- Evening with Graeme Swann and Jonathon Agnew at Trent Bridge (Aug/Sept tbc)
- BCCT Corporate 6-a side to be held at the Knipton Cricket Ground (Wed 4<sup>th</sup> Sept)
- BCCT Charity Golf Day to be held at Radcliffe on Trent Golf Club (Thurs 19<sup>th</sup> Sept)

**BELVOIR CASTLE CRICKET TRUST LTD****Statement of financial activities for the period ended 30 September 2012**

	Unrestricted funds	Restricted funds	Total 30/09/12	Total to 30/09/11
	£	£	£	£
<b>INCOME</b>				
Charitable activities				
Cricket and Countryside Days	4,070	3,000	7,070	3,504
Belvoir Bees	6,223	11,476	17,699	6,807
Teach Cricket	-	1,000	1,000	1,400
Special Needs	-	5,000	5,000	-
Fundraising activities				
Cricket	8,580	-	8,580	5,143
Golf	4,666	-	4,666	4,696
Cricket Bat Willow	1,900	-	1,900	4,014
Celebrity evening (Tony Greig 2012)	5,230	-	5,230	14,610
Ashes evening	-	-	-	4,027
Charity Shoot	10,139	-	10,139	-
Sundry	283	-	283	-
Other grants and donations etc.	39,055	-	39,055	49,784
Bank Interest	46	-	46	17
Total incoming resources	<u>80,192</u>	<u>20,476</u>	<u>100,668</u>	<u>94,002</u>
<b>EXPENDITURE</b>				
Charitable activities				
Cricket and Countryside Days	15,797	3,000	18,797	16,403
Belvoir Bees	18,855	11,476	30,331	28,058
Teach Cricket	2,450	1,000	3,450	2,537
Special Needs	611	5,000	5,611	7,149
Fundraising activities				
Cricket	6,309	-	6,309	8,721
Golf	1,793	-	1,793	2,590
Cricket Bat Willow	250	-	250	1,030
Celebrity Evening (Tony Greig 2012)	3,589	-	3,589	6,071
Ashes evening	-	-	-	679
Marketing and promotion	6,371	-	6,371	8,507
Other expenses	7,394	-	7,394	11,800
Total resources expended	<u>63,419</u>	<u>20,476</u>	<u>83,895</u>	<u>93,545</u>
Net incoming resources	16,773	-	16,773	457
Total funds brought forward	5,884	-	5,884	5,427
Total funds carried forward	<u>22,657</u>	<u>-</u>	<u>22,657</u>	<u>5,884</u>
Represented by;				
Current Assets			27,592	14,787
Less - Liabilities			(4,935)	(8,903)
Net Assets			<u>22,657</u>	<u>5,884</u>

Full Copies of the Accounts are available at  
[www.charitycommission.org.uk](http://www.charitycommission.org.uk) or [www.belvoircastlecrickettrust.co.uk](http://www.belvoircastlecrickettrust.co.uk)

**TRUSTEES' STATEMENT**

The extract from the financial statements has been agreed by our independent examiner, Elliot Harris FCA, DChA, as being consistent with the full financial statements for the year ended 30 September 2012. These were prepared in accordance with the Statement of Recommended Accounting Practice "Accounting and Reporting by Charities" 2005.

This extract from the financial statements is not the full statutory financial statements and therefore may not contain sufficient information to enable a full understanding of the financial affairs of Belvoir Castle Cricket Trust Ltd. For further information the full Trustees' Annual Report and Accounts, and the full Independent Examiner's report should be consulted. Copies of these can be obtained from the registered office. The full financial statements were approved by the Board of Trustees on 29 November 2012 and have been submitted to the Charity Commission and Companies House.

## PATRON

Her Grace The Duchess of Rutland

## AMBASSADOR

Graeme Swann

## Trustees

Phil O'Brien – Chairman

Emma Agnew – Trustee

John Barclay – Trustee

Stephen Henderson – Trustee

Phillip Hodson – Trustee

Heather McGregor – Trustee

David Paton – Trustee

Oliver Stocken - Trustee

## Executives

Darren Bicknell – Director

Neil Atkins – Assistant Director

## Belvoir Castle Cricket Trust

Belvoir Castle, Grantham, NG32 IPE

T: 01476 848111

W: [www.belvoircastlecrickettrust.co.uk](http://www.belvoircastlecrickettrust.co.uk)

E: [darren@belvoircastlecrickettrust.co.uk](mailto:darren@belvoircastlecrickettrust.co.uk)

## Cricket Bat Willow Donors

John Chatfeild-Roberts

Simon Dyson

Richard Hedley

Stephen Henderson

Phillip Hodson

Mark Samworth

Wilfred Swann

Annie Williams

Philip Williams

Justin Dowley



Winnifred Potter Trust  
 Chetwode Foundation  
 The Dr Mortimer & Theresa Sackler Foundation  
 Samworth Foundation  
 John Chatfeild-Roberts  
 Bill and Hayley Blevins  
 Florence Turner Trust  
 Garfield Weston Trust  
 Crispa (R Cahn Trust)